

# iMGP DBi Managed Futures Strategy ETF DBMF

---

Managed by Dynamic Beta investments

May 2023 Review

# Important Disclosures

**The Fund’s investment objectives, risks, charges, and expenses must be considered carefully before investing. The statutory and summary prospectuses contain this and other important information about the investment company, and it may be obtained by calling 800-960-0188 or visiting [www.partnerselectfunds.com](http://www.partnerselectfunds.com). Read it carefully before investing.**

iMGP DBi Managed Futures Strategy ETF Risks: Investing involves risk. Principal loss is possible. The Fund is “non-diversified,” so it may invest a greater percentage of its assets in the securities of a single issuer. As a result, a decline in the value of an investment in a single issuer could cause the Fund’s overall value to decline to a greater degree than if the Fund held a more diversified portfolio.

The Fund should be considered highly leveraged and is suitable only for investors with high tolerance for investment risk. Futures contracts and forward contracts can be highly volatile, illiquid and difficult to value, and changes in the value of such instruments held directly or indirectly by the Fund may not correlate with the underlying instrument or reference assets, or the Fund’s other investments. Derivative instruments and futures contracts are subject to occasional rapid and substantial fluctuations. Taking a short position on a derivative instrument or security involves the risk of a theoretically unlimited increase in the value of the underlying instrument. Exposure to the commodities markets may subject the Fund to greater volatility than investments in traditional securities. Exposure to foreign currencies subjects the Fund to the risk that those currencies will change in value relative to the U.S. Dollar. By investing in the Subsidiary, the Fund is indirectly exposed to the risks associated with the Subsidiary’s investments. Fixed income securities, or derivatives based on fixed income securities, are subject to credit risk and interest rate risk.

Diversification does not assure a profit nor protect against loss in a declining market.

[Index Definitions](#) | [Industry Terms and Definitions](#)

iM Global Partner Fund Management, LLC has ultimate responsibility for the performance of the iMGP Funds due to its responsibility to oversee the funds’ investment managers and recommend their hiring, termination, and replacement.

The iMGP DBi Managed Futures Strategy ETF is distributed by ALPS Distributors, Inc. iMGP, DBi and ALPS are unaffiliated.

LGE000195 exp. 9/30/2023



# iMGP DBi Managed Futures Strategy ETF Performance

## Average Annual Total Returns

Quarter End Performance as of 3/31/2023	Year-to-Date	12 Month Total Return	3 Year	5 Year	Since Inception (5/7/2019)
iMGP DBi Managed Futures Strategy ETF (NAV)	-9.31%	-0.49%	7.69%	n/a	8.66%
iMGP DBi Managed Futures Strategy ETF (Price)	-9.65%	-0.94%	7.52%	n/a	8.57%
SG CTA	-5.21%	0.96%	7.84%	n/a	6.57%
SG Trend	-7.30%	0.31%	10.19%	n/a	9.36%
Morningstar Systematic Trend	-4.59%	-1.07%	5.44%	n/a	4.61%

**Performance data quoted represents past performance. Past performance does not guarantee future results. The investment return and principal value of an investment will fluctuate so that an investor's shares, when redeemed, may be worth more or less than their original cost. Current performance of the fund may be lower or higher than the performance quoted. Performance data current to the most recent month end may be obtained by calling 888-898-1041.**

Short term performance, in particular, is not a good indication of the fund's future performance, and an investment should not be made based solely on returns.

All of the assets and liabilities of the Predecessor Fund were transferred to the Fund in a reorganization on 09/20/2021.

Shares of any ETF are bought and sold at market price (not NAV), may trade at a discount or premium to NAV and are not individually redeemed from the Fund. Brokerage commissions will reduce returns.

SG CTA Index:

The SG CTA Index is an index published by Société Générale that is designed to reflect the performance of a pool of Commodity Trading Advisor (CTAs) selected from larger managers that employ systematic managed futures strategies. The index is reconstituted annually.

SG Trend Index:

The SG Trend Index is equal-weighted and reconstituted annually. The index calculates the net daily rate of return for a pool of trend following based hedge fund managers.

Morningstar Systematic Trend Category:

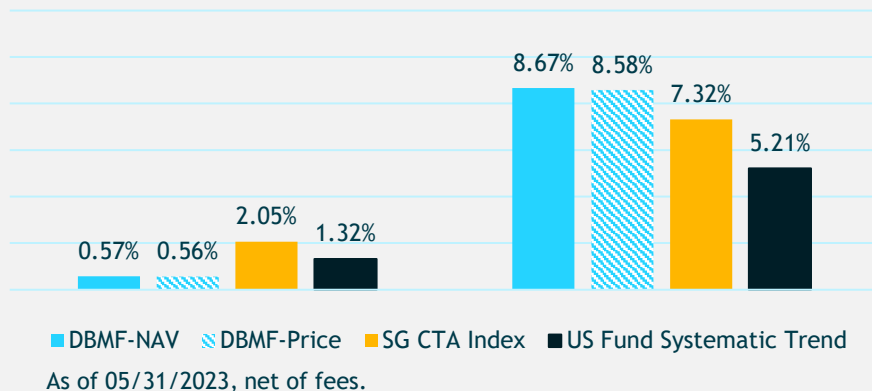
Contains funds that primarily implement trend-following, price-momentum strategies by trading long and short liquid global futures, options, swaps, and foreign exchange contracts. The remaining exposure may be invested in a mix of other complementary non-traditional risk premia. These portfolios typically obtain exposure referencing a mix of diversified global markets, including commodities, currencies, government bonds, interest rates and equity indexes.

# Key Points



## PERFORMANCE

May 2023      Inception To Date



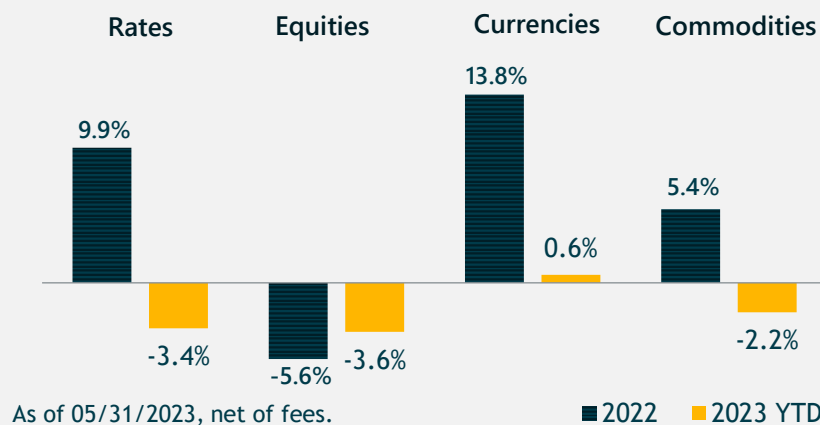
## MACRO/MARKETS

“One Trade Market” with Fed moves reverberating in unexpected ways.

Hedge funds calling it “weird”:

- The hard recession that wasn’t
- Simultaneous Fed tightening and easing
- Macro near misses (banking, geopolitics)
- Price moves drive narrative

## 2022/2023YTD CONTRIBUTION



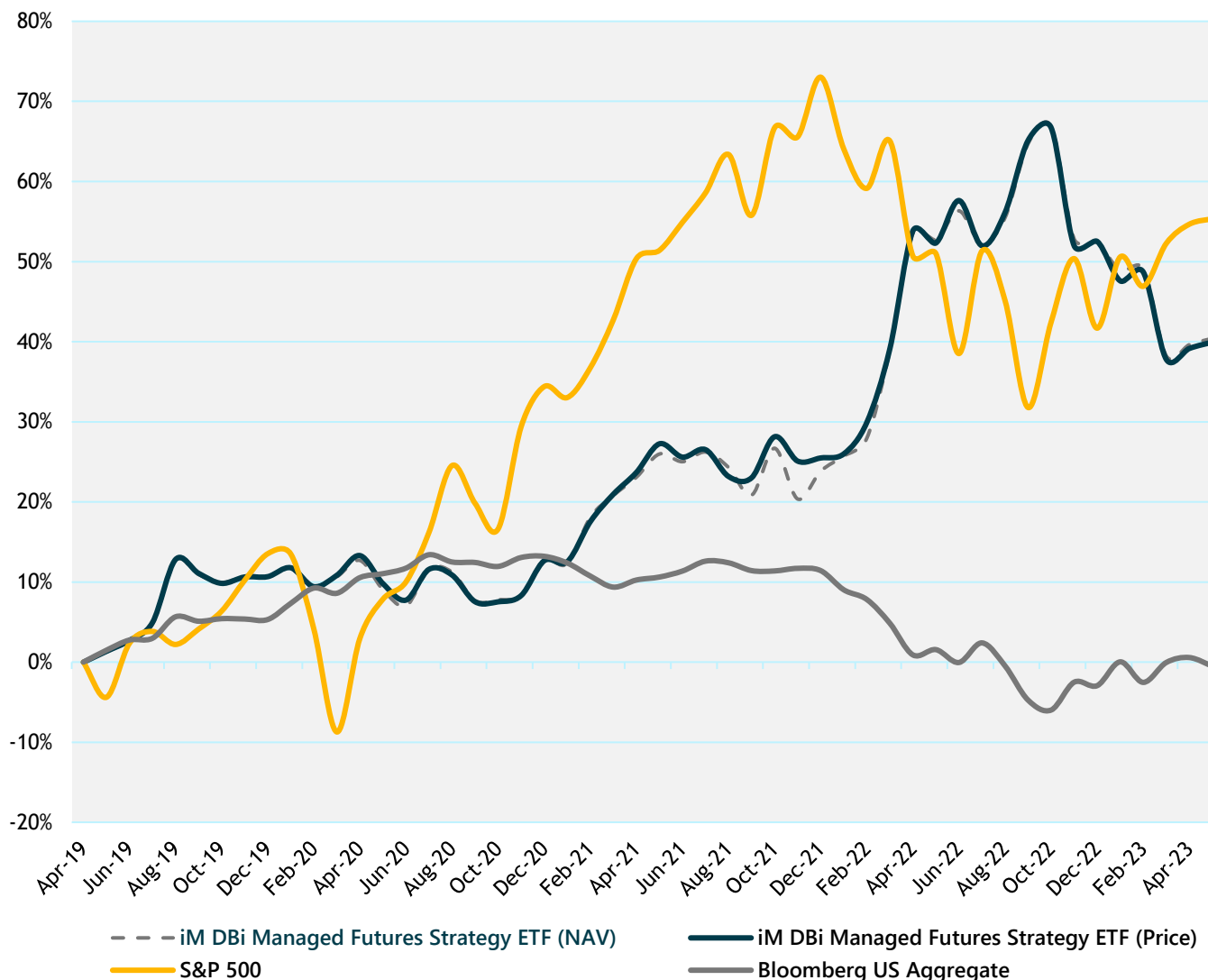
## POSITIONING SUMMARY

1. Long gold (inflation sticks)
2. Short 2 Year Treasuries (rate hikes aren’t over)
3. Somewhat long MSCI EAFE and S&P 500 vs MSCI EM
4. Short the Yen vs USD again (replay of 2022?)
5. Short crude oil (recession hedge)

Past results are not indicative of future results. For standardized performance, see slide 3. Short positions in the portfolio refer to taking a directional position on a reference price falling.

PAST RESULTS ARE NOT INDICATIVE OF FUTURE RESULTS.

# Diversification to Stocks and Bonds



## KEY STATS (PRICE SERIES)

**CAGR:**  
8.6% Net

**Cumulative Return:**  
39.9% Net

**Correlation to S&P 500:**  
-0.24

**Alpha to S&P 500:**  
9.5% (Annualized)

**Correlation to Bloomberg US Aggregate:**  
-0.55

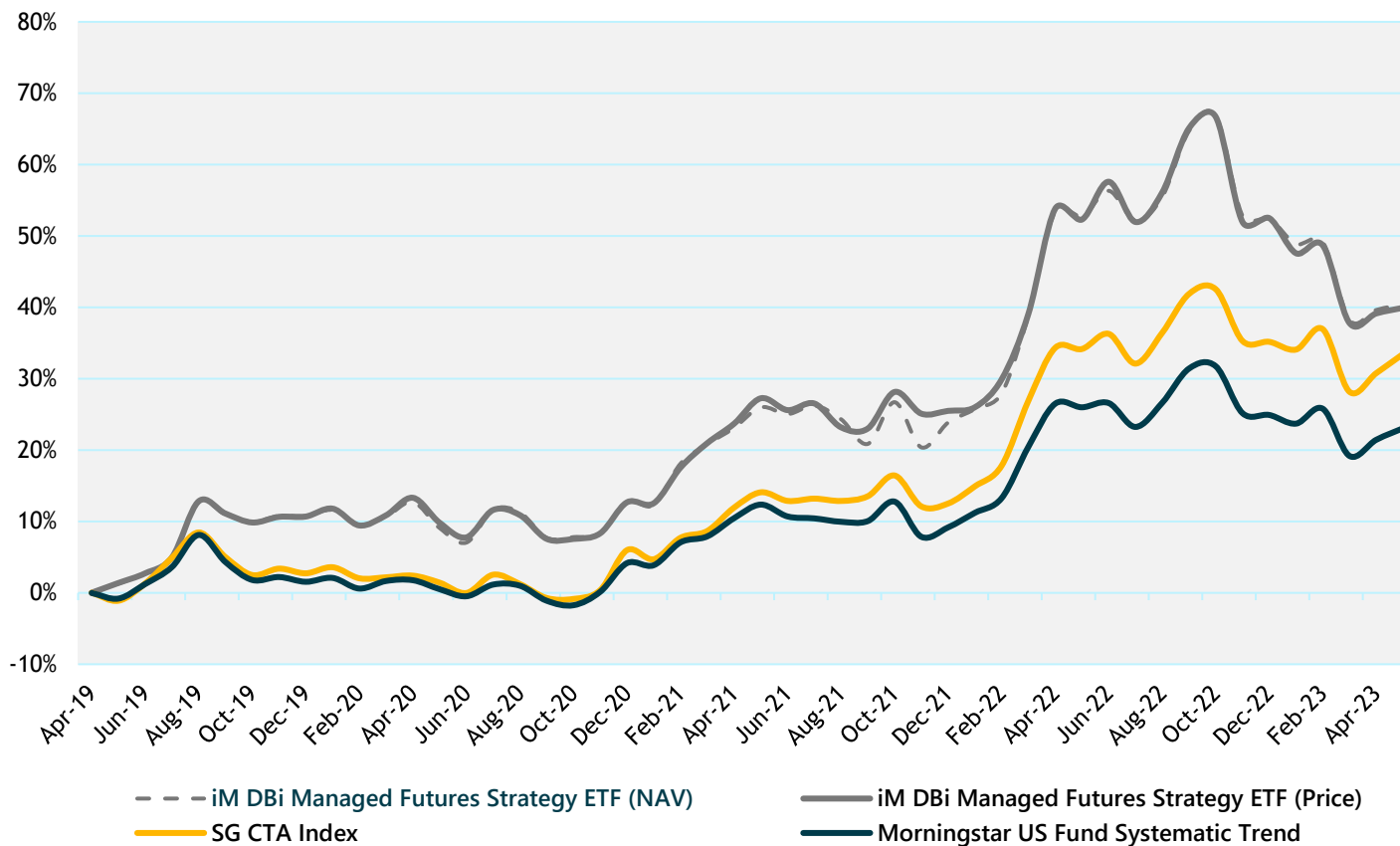
**Alpha to Bloomberg US Aggregate:**  
6.1% (Annualized)

Source: Bloomberg. DBi. As of 31 May 2023, net of fees, since inception (5/7/19). Data refers to cumulative past performance. Cumulative past performance is not a reliable indicator of future results. The Fund referred to within this presentation is not managed against the indices shown in this slide or elsewhere in this presentation or against any other benchmark. This is an active ETF which is not managed in relation to any benchmark. This data is being shown for illustrative purposes only. The index is not representative of the entire population of CTAs or hedge funds. The index's performance may not be indicative of any individual CTAs or hedge funds. Past results are not indicative of future results.

PAST RESULTS ARE NOT INDICATIVE OF FUTURE RESULTS.

# DBMF vs. SGCTA and M\* US Systematic Trend

- DBMF was launched May 8, 2019 (based on a strategy launched in July 2016) to bring the benefits of managed futures to a broader investor base.



KEY STATS (PRICE SERIES)		
CAGR:	8.6%	DBMF
	7.3%	SGCTA
	5.2%	M*
Cumulative Return:	39.9%	DBMF
	33.5%	SGCTA
	23.1%	M*
DBMF Correlation:	0.89 to	SGCTA
	0.90 to	M*
Volatility:	11.9%	DBMF
	9.3%	SGCTA
	8.4%	M*

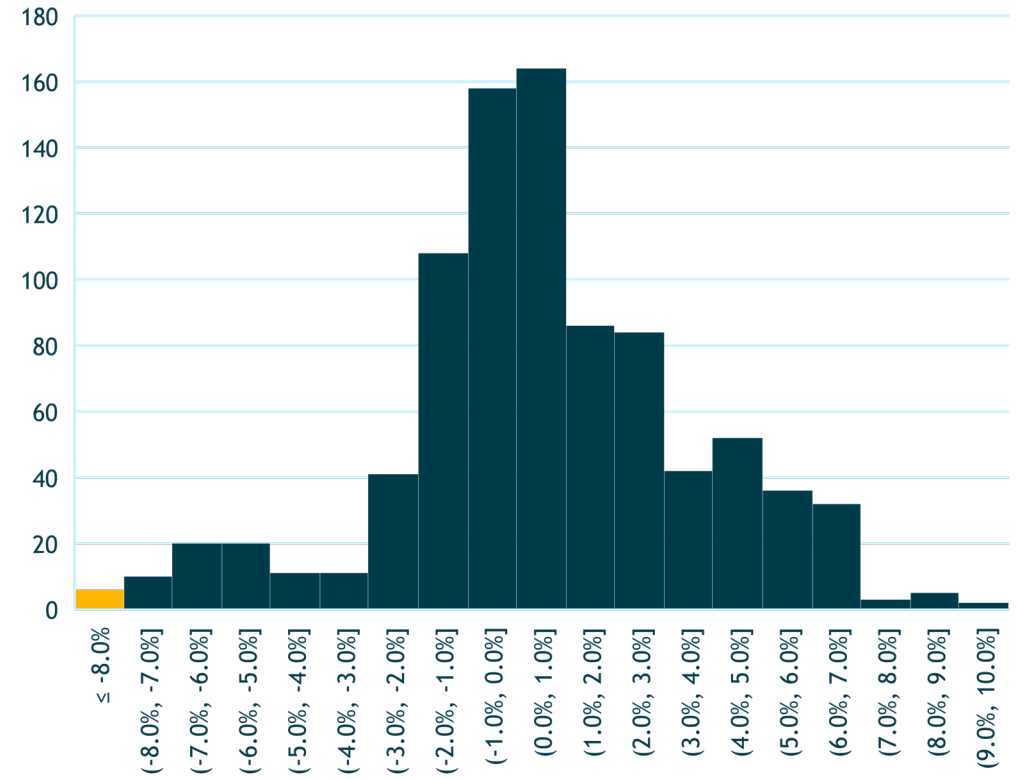
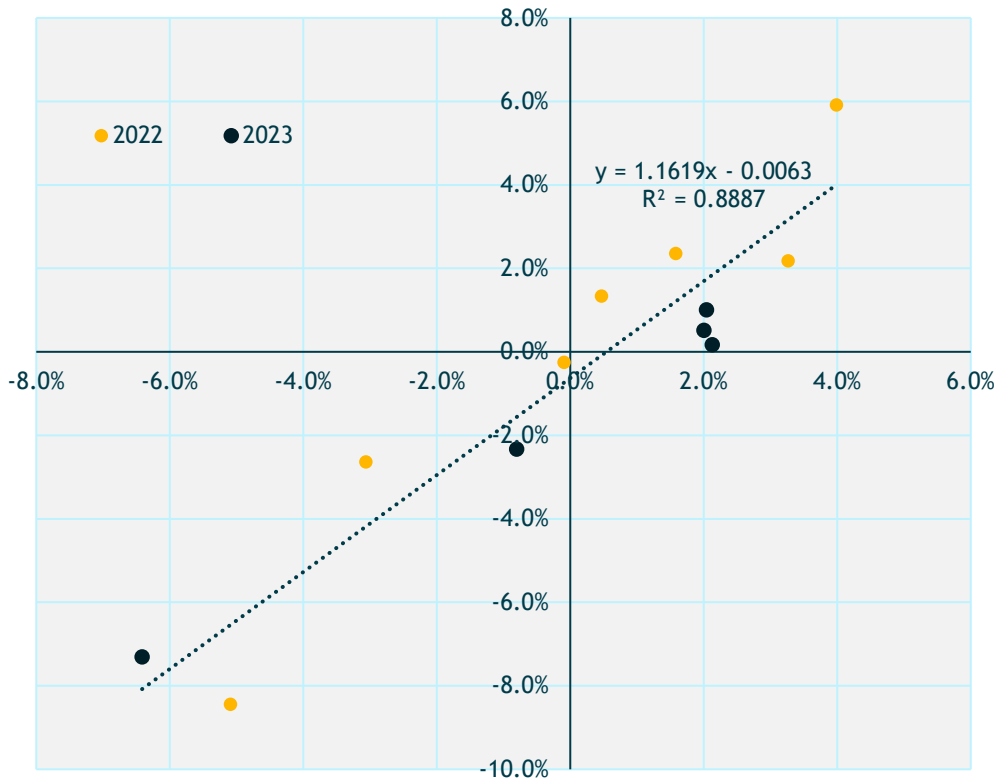
Source: Bloomberg, DBi. Using daily data - 8 May 2019 - 31 May 2023, net of fees. Data refers to cumulative past performance. Cumulative past performance is not a reliable indicator of future results. The Fund referred to within this presentation is not managed against the indices shown in this slide or elsewhere in this presentation or against any other benchmark. This is an active ETF which is not managed in relation to any benchmark. This data is being shown for illustrative purposes only. The index is not representative of the entire population of CTAs or hedge funds. The index's performance may not be indicative of any individual CTAs or hedge funds. The index may not have been adjusted for fees/commissions. The index cannot be traded by individual investors. The index's performance may not be indicative of any individual CTA or hedge fund. The actual rates of return experienced by investors may be significantly different and more volatile than those of the index .

PAST RESULTS ARE NOT INDICATIVE OF FUTURE RESULTS.

# 2023 Performance: The Model is Working

- Despite YTD underperformance, correlations remain high (~90%) and broad positioning is consistent with both large CTAs and simple trend models.
- Rolling six-month underperformance is a 3-sigma event due to the Major Markets factor set and inconsistent with decades of data (see next page).

Rolling 6M daily DBMF alpha ITD

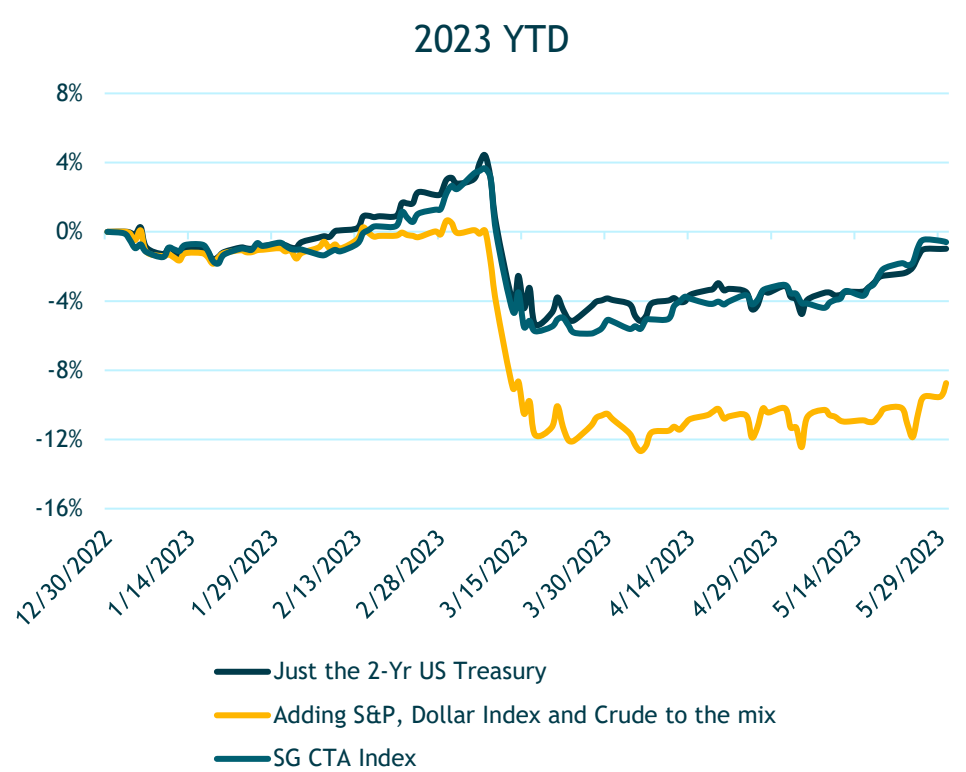
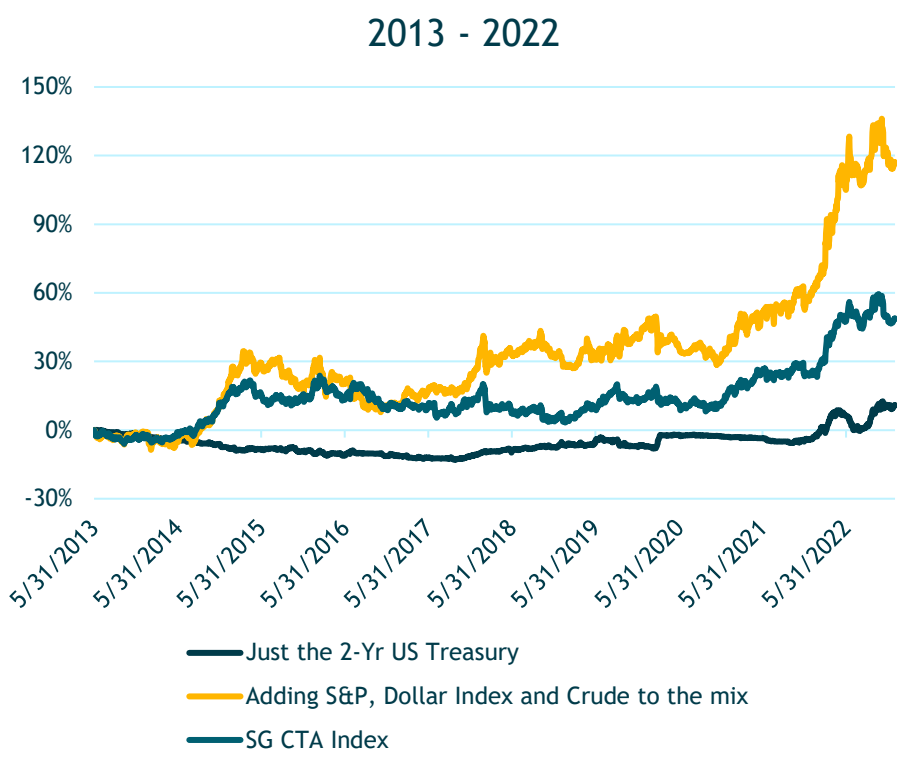


Source: DBi. As of 31 May 2023. Data refers to cumulative past performance. Cumulative past performance is not a reliable indicator of future results. This data is being shown for illustrative purposes only. This is an active ETF which is not managed in relation to any benchmark. The index is not representative of the entire population of CTAs or hedge funds. The index's performance may not be indicative of any individual CTAs or hedge funds. Past results are not indicative of future results.

PAST RESULTS ARE NOT INDICATIVE OF FUTURE RESULTS.

# 2023: Research on the “One Trade Market”

- In 2023, a one factor model with only the Two Year Treasury would have closely matched the SocGen CTA index – diversification into Major Markets detracted.
- Over time, diversification with across Major Markets – even a simple four factor model – is necessary to replicate broad CTA drivers.



Source: DBi. As of 31 May 2023. This data is being shown for illustrative purposes only. “S&P” is the S&P 500 Index Future rolling front month, “Dollar Index” is the USDX Dollar Index rolling front month, “Crude” is generic second CL futures contract. Data refers to cumulative past performance. Cumulative past performance is not a reliable indicator of future results. The index is not representative of the entire population of CTAs or hedge funds. The index’s performance may not be indicative of any individual CTAs or hedge funds. Past results are not indicative of future results.

PAST RESULTS ARE NOT INDICATIVE OF FUTURE RESULTS.



# Volatility-Adjusted Positioning

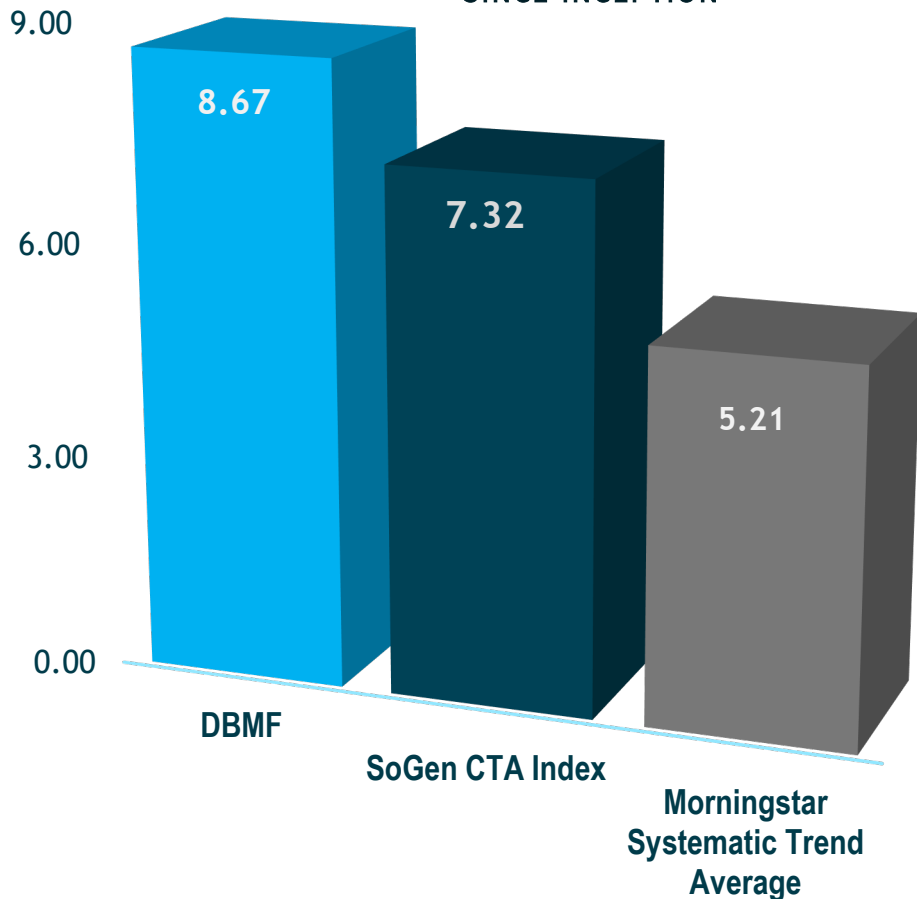


Source: Bloomberg & DBi. Past results are not indicative of future results.  
 Short Term Rates: Refers to investments in futures contracts which derive performance from fixed income instruments that have a maturity of 2 years or less  
 Intermediate Term Rates: Refers to investments in futures contracts which derive performance from fixed income instruments that have a maturity of 10 years or less but greater than 2 years  
 Long Term Rates: Refers to investments in futures contracts which derive performance from fixed income instruments that have a maturity of greater than 10 years  
 EAFE: MSCI EAFE Index  
 Emerging Markets: MSCI Emerging Markets Index  
**PAST RESULTS ARE NOT INDICATIVE OF FUTURE RESULTS.**

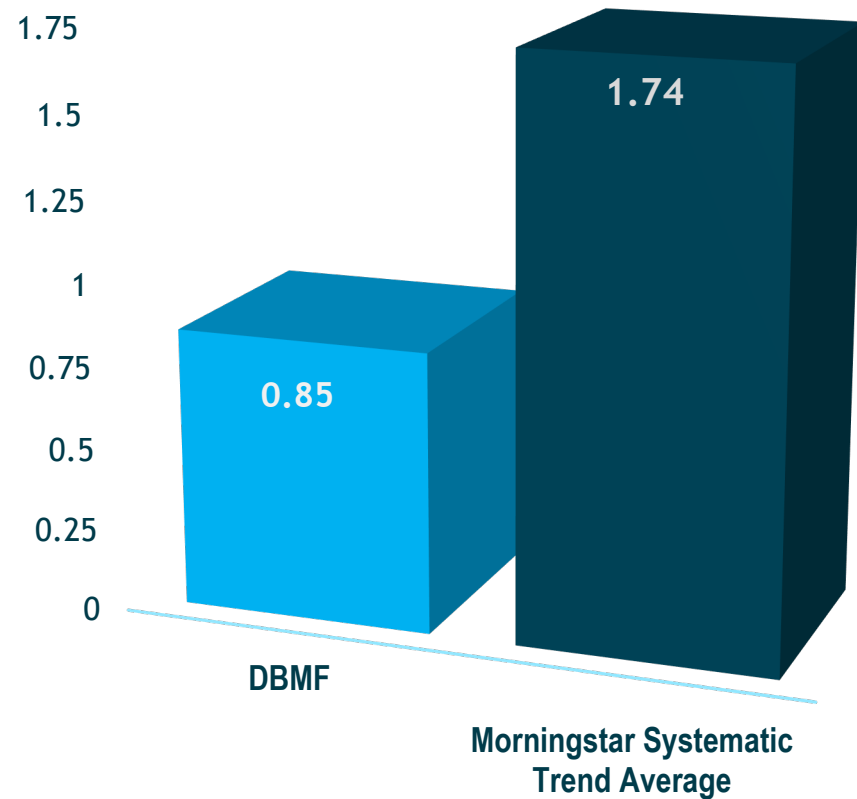
# Fee Reduction is the Purest Form of Alpha



## ANNUAL PERFORMANCE SINCE INCEPTION



## EXPENSE RATIO



Source: Morningstar. DBi. As of 31 May 2023, net of fees, since inception (5/7/19). Data refers to cumulative past performance. Cumulative past performance is not a reliable indicator of future results. This is an active ETF which is not managed in relation to any benchmark. This data is being shown for illustrative purposes only. The index is not representative of the entire population of CTAs or hedge funds. The index's performance may not be indicative of any individual CTAs or hedge funds. Past results are not indicative of future results.  
PAST RESULTS ARE NOT INDICATIVE OF FUTURE RESULTS.